

COST OF LIVING CRISIS - AVAILABLE SUPPORT

July 2022

Financial Assessments

SOURCES OF SUPPORT AND ELIGIBILITY

- ▶ On 26 May, The Government announced a variety of measures to provide support to individual households with cost of living crisis, in particular , cost of energy. There are three main streams of support delivered via:
- ▶ CENTRAL GOVERNMENT - mainly via DWP and HMRC to recipients of benefits and pensions
- ▶ COUNCILS - targeted support via Energy Rebate Scheme and Household Support Fund
- ▶ ENERGY COMPANIES - delivered directly via energy suppliers

CENTRAL GOVERNMENT SUPPORT

ONE OFF PAYMENTS AVAILABLE TO:

- ▶ HOUSEHOLDS ON MEANS TESTED BENEFITS ADMINISTERED BY DWP AND HMRC
- ▶ PENSIONERS paid via DWP
- ▶ PEOPLE WITH DISABILITIES paid via DWP

[Cost of living support factsheet: 26 May 2022 - GOV.UK](https://www.gov.uk/government/factsheets/cost-of-living-support-factsheet-26-may-2022)
www.gov.uk

EALING COUNCIL SUPPORT

HOUSEHOLD SUPPORT FUND

ENERGY REBATE SCHEME (main and discretionary)

ONGOING SUPPORT AND DISCRETIONARY FUNDS

- Local Welfare Assistance
- Discretionary Housing Payments
- Discretionary Council Tax Discount
- Healthy Homes Ealing

SUPPORT FROM ENERGY COMPANIES

- ▶ ONE OFF £400 CREDIT TO ALL HOUSEHOLDS WHICH DOES NOT NEED TO BE REPAID

Energy suppliers will deliver this support to households with a domestic electricity meter over six months from October.

- Direct debit and credit customers will have the money credited to their account,
- Customers with pre-payment meters will have the money applied to their meter or paid via a voucher.

SUPPORT RELATED TO COST OF LIVING AND ENERGY - SUMMARY

| SUPPORT SCHEME | ADMINISTERED BY | HOW MUCH | HOW AND WHEN IT WILL BE PAID | APPLICATION REQUIRED? | ELIGIBILITY CRITERIA |
|--------------------------------|------------------|--|---|---|--|
| One-off cost of Living Payment | DWP/HMRC | £650 | Directly to eligible recipients (split into 2 payments - one in July and one in autumn) | No | In receipt of UC, JSA, ESA (IR), IS, WTC, CTC, PC Cost of living support factsheet: 26 May 2022 - GOV.UK (www.gov.uk) |
| One-off cost of Living Payment | DWP | £300 | Directly to eligible recipients (November/December as top up of Winter Fuel Payment) | No | Pensioners who receive Winter Fuel Payment |
| One-off cost of Living Payment | DWP | £150 | Directly to eligible recipients (September payments) | No | In receipt of DLA, PIP, AA, Scottish Disability Benefits, Armed Forces Independence Payment, War Pension Mobility Supplement |
| Energy Bills Support scheme | Energy suppliers | £400 | Credit to accounts or pre-paid meters or voucher (from October onwards) | No | All households |
| Energy Rebate | Council | £150 | Credit into account for DD payers; credit to account of Council Tax for others (paid in May to DD payers, application proves for non DD or credit to CTAX account) | No unless not paying by DD | All Council Tax Payers in band A to D properties, Discretionary scheme details to follow Energy bills rebate Energy bills rebate Ealing Council |
| Household Support Fund | Council | Various amounts depending on circumstances | Supermarket vouchers, post office payments, BACS (please see next slides) | No unless additional support required via LWA | See next slides |

Ealing Household Support Fund - April 22 to September 2022

SUPPORT FOR FAMILIES :

- Families eligible for Free School Meals (FSM) where eligibility is based on low income will receive supermarket vouchers in:
 - May - £15 per child
 - July-£90 per child

- *Supporting circa 13,500 children/9,000 households*

- Families with children under the age of 5 in receipt of Housing Benefit and/or Council Tax Reduction -
 - May - £15 per household
 - July-£90 per household

- *Supporting 1,223 households*

The Government has also announced extension of the HSF beyond September, details to be confirmed.

Ealing Household Support Fund - April 22 to September 2022

SUPPORT FOR CARE LEAVERS:

➤ Ealing Care leavers will receive supermarket vouchers as follows:

- May - £15 per Care leaver
- July-£90 per Care leaver

❑ *Supporting 277 care leavers*

➤ SUPPORT FOR PENSIONERS

- One off £103.79 payment via Post Office in July/August

❑ *Supporting 8,452 pensioners on Pension Credit*

➤ SUPPORT FOR OTHER HOUSEHOLDS

- Via application to Local Welfare Assistance (LWA);
- ❑ *Expected to support around 1,000 households up to September*

The Council also operates various discretionary schemes:

▶ EXISTING SUPPORT AND DISCRETIONARY FUNDS

- Local Welfare Assistance; help with food, energy bills, furniture and wider essentials

[Local welfare assistance | Local welfare assistance | Ealing Council](#)

- Discretionary Housing Payment - additional help with rent or securing new tenancies for those on Housing Benefit and Universal Credit housing element

➤ [Discretionary housing payments and discretionary council tax discounts | Discretionary housing payments and discretionary council tax discounts | Ealing Council](#)

- Discretionary Council Tax Discount

[Discretionary housing payments and discretionary council tax discounts | Discretionary housing payments and discretionary council tax discounts | Ealing Council](#)

- Healthy Homes Ealing - improving energy efficiency, accessing available grants and community support

➤ [Energy efficiency | Ealing Council](#)

➤ [Energy efficiency advice | Ealing Council](#)

Case studies - total value of cost of living support

The examples take into account the automatic payments issued by Energy Suppliers, DWP and the Council. The discretionary Energy Rebate scheme and Household Support Fund beyond September 2022 have not been taken into account as details are not yet available.

Case 1: Single parent with 2 children of school age, on Universal Credit, living in band C property

Energy Bills Support scheme: £400

Council's Energy Rebate Scheme: £150

DWP cost of living one off payment: £650

Ealing Household Support Fund: £210 *(additional support available via LWA application)*

Total value of support with cost of living: £1,410*

** This is likely to increase as details of discretionary Energy Rebate and further HSF details are announced.*

Case studies - total value of cost of living support

The examples take into account the automatic payments issued by Energy Suppliers, DWP and the Council. The discretionary Energy Rebate scheme and Household Support Fund beyond September 2022 have not been taken into account as details are not yet available.

Case 2: Couple with 3 children of school age, working and in receipt of Universal Credit, living in band C property

Energy Bills Support scheme: £400

Council's Energy Rebate Scheme: £150

DWP cost of living one off payment: £650

Ealing Household Support Fund: £315 *(additional support available via LWA application)*

Total value of support with cost of living: £1,515*

** This is likely to increase as details of discretionary Energy Rebate and further HSF details are announced.*

Case studies - total value of cost of living support

The examples take into account the automatic payments issued by Energy Suppliers, DWP and the Council. The discretionary Energy Rebate scheme and Household Support Fund beyond September 2022 have not been taken into account as details are not yet available.

Case 3: Couple, no children, one person in receipt of Employment Support Allowance and Disability Living Allowance, living in Band B property.

Energy Bills Support scheme: £400

Council's Energy Rebate Scheme: £150

DWP cost of living one off payment: £650

£150

Ealing Household Support Fund: £0 *(available by application depending on needs)*

Total value of support with cost of living: £1,350*

** This is likely to increase as details of discretionary Energy Rebate and further HSF details are announced.*

Case studies - total value of cost of living support

The examples take into account the automatic payments issued by Energy Suppliers, DWP and the Council. The discretionary Energy Rebate scheme and Household Support Fund beyond September 2022 have not been taken into account as details are not yet available.

Case 4: Single person, on Employment and Support Allowance, living in band A property:

Energy Bills Support scheme: £400

Council's Energy Rebate Scheme: £150

DWP cost of living one off payment: £650

Ealing Household Support Fund: £0 *(available by application depending on needs)*

Total value of support with cost of living: £1,200*

** This is likely to increase as details of discretionary Energy Rebate and further HSF details are announced.*

Case studies - total value of cost of living support

The examples take into account the automatic payments issued by Energy Suppliers, DWP and the Council. The discretionary Energy Rebate scheme and Household Support Fund beyond September 2022 have not been taken into account as details are not yet available.

Case 5: Pensioner on Pension Credit Guarantee, entitled to Winter Fuel Payment, living in band C property:

Energy Bills Support scheme: £400

Council's Energy Rebate Scheme: £150

DWP cost of living one off payment: £650

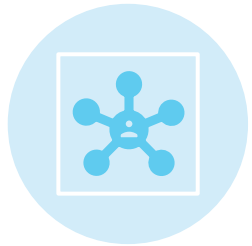
£300

Ealing Household Support Fund: £103.79 *(additional support available via LWA application)*

Total value of support with cost of living: £1,603.79*

** This is likely to increase as details of discretionary Energy Rebate and further HSF details are announced.*

Holistic support for employment



Steps4Success programme -
Join initiative with
Employment and Skills,
Connections and local JCP



Holistic approach - support
with employment barriers, i.e.
budgeting, childcare, skills, CV
and interview preparation



121 intensive support



Access to IT equipment and data
(240 devices and 100 data contracts)

Assisting residents to access support

1. Community hubs: Ealing, Acton, Southall and Northolt libraries

Support with:



Accessing services



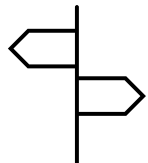
Establishing available support to an individual



Help navigating website and assistance with online My Account



Liaison with back office



Signposting to community support

Supporting residents to access support

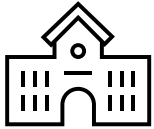


2. Telephone support on Call Centre

Support with digital forms on telephone, special line for Energy Bill Rebate Telephone line 020 8825 7170



3. Special web page with summary of information on support available Coping with the rising cost of living



4. Schools promoting HSF vouchers and LWA

Further information:

Joanna Pavlides

Ealing Council

Assistant Director - Financial Assessments

E-mail: pavlidej@ealing.gov.uk